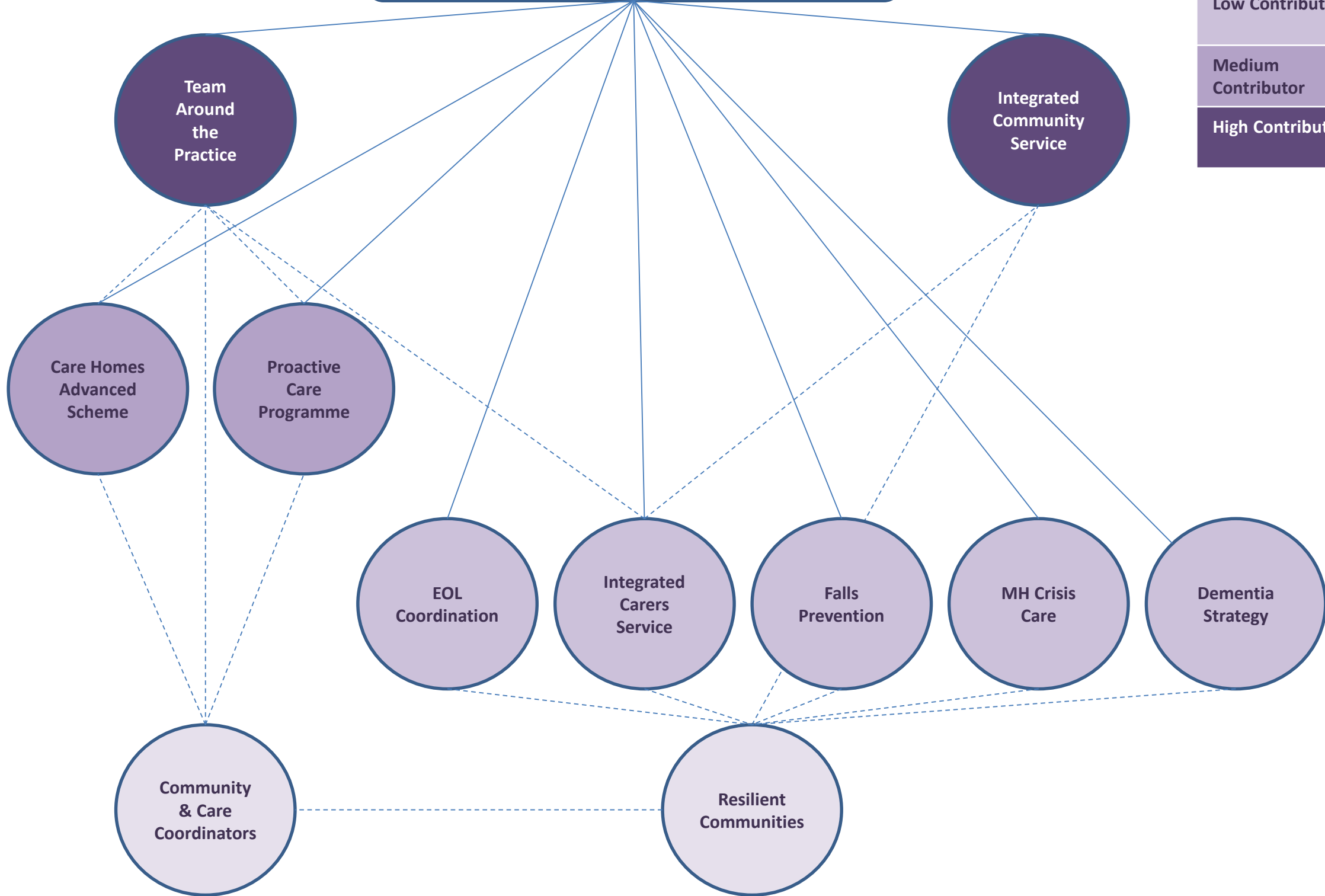


BCF1 - Reducing Non-Elective Admissions

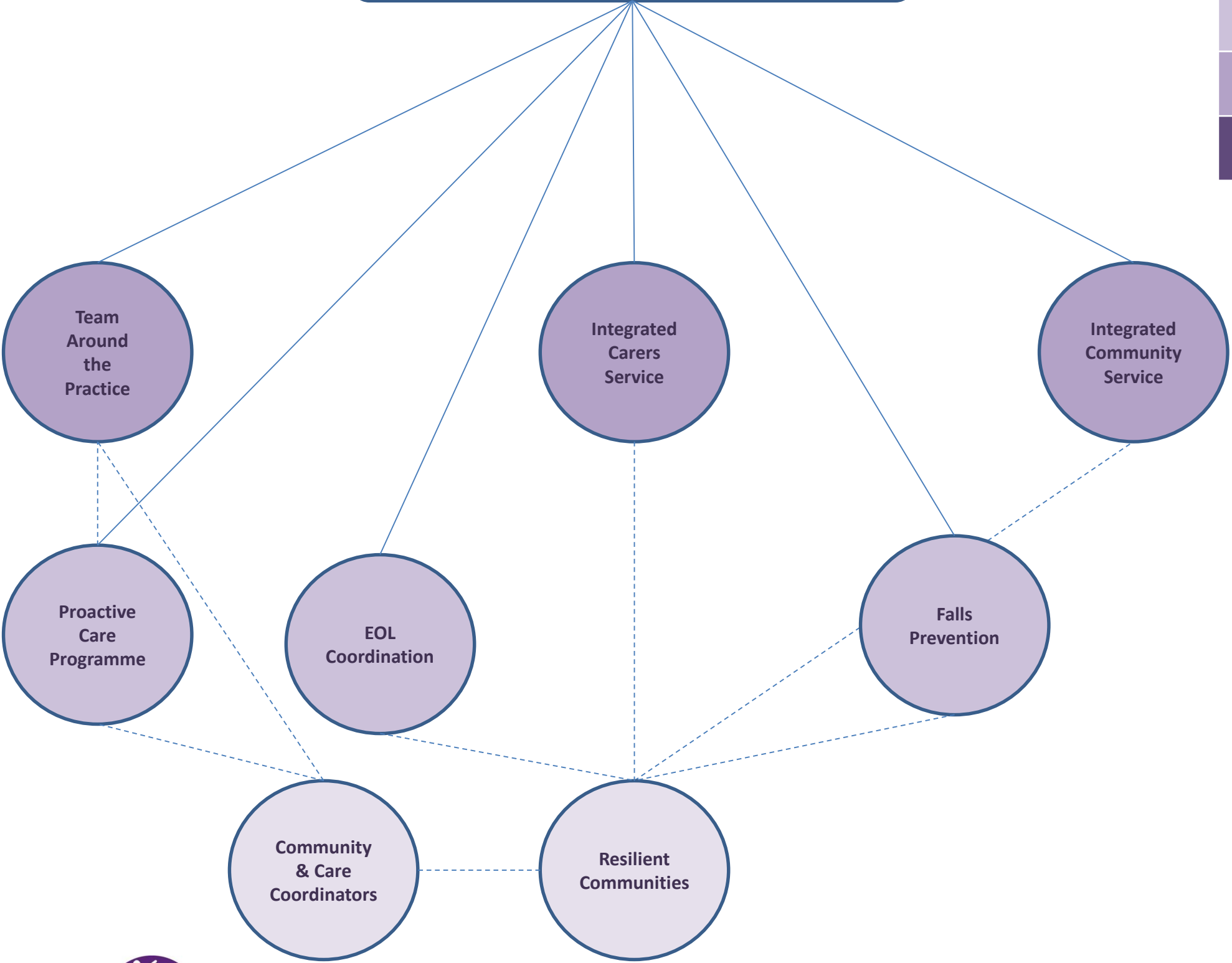
Target: 1260 Less admissions to acute hospitals per year (105 PCM)	
Enabler	
Low Contributor	0-20 admissions PCM
Medium Contributor	20-80 admissions PCM
High Contributor	Over 80 admissions PCM



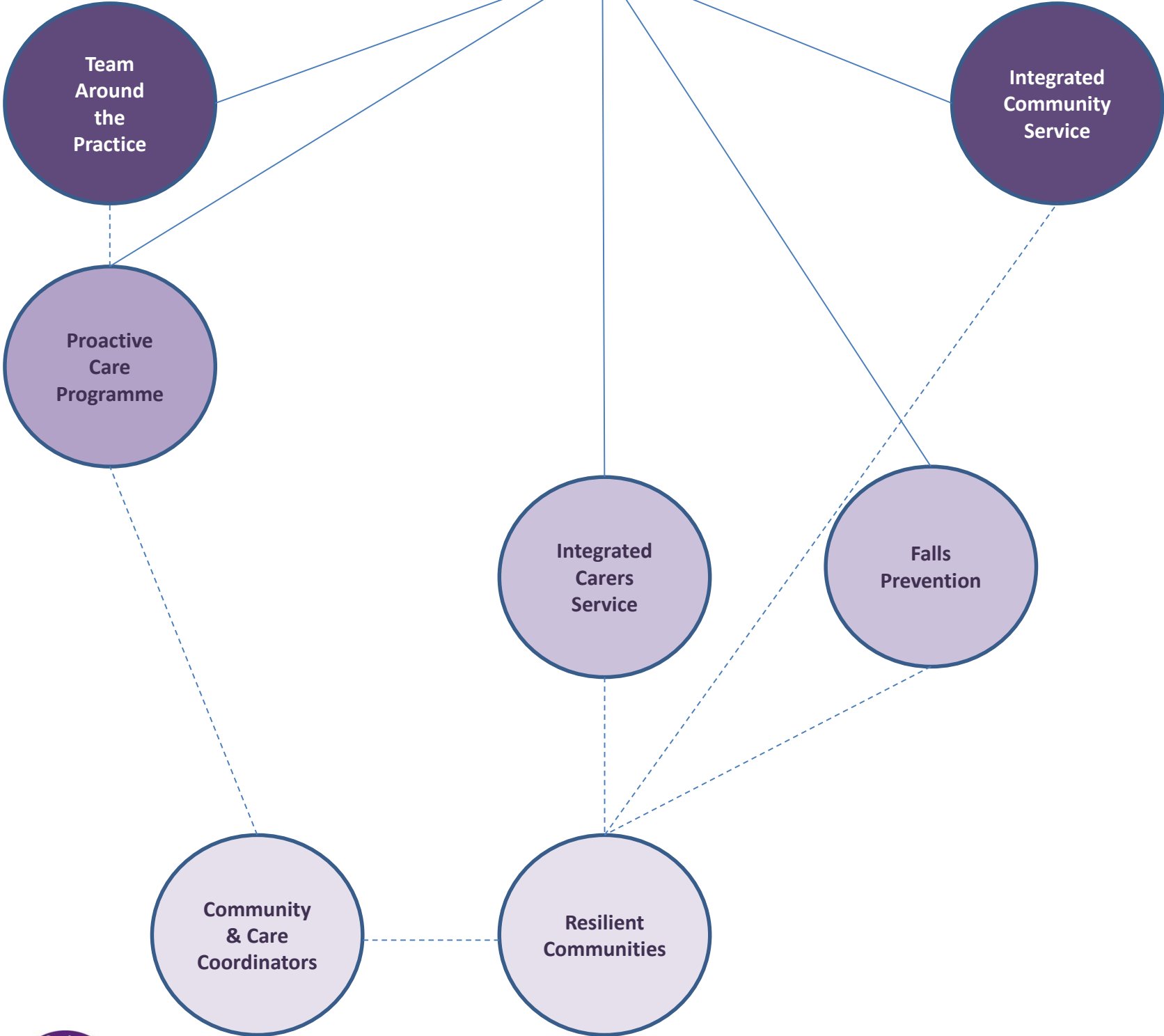
BCF2 – Care Home Admissions

Target:
24 Less admissions to care homes per year (2 PCM)

Enabler	
Low Contributor	0-2 admissions PCM
Medium Contributor	2-4 admissions PCM
High Contributor	Over 4+ admissions PCM



BCF3 – Effectiveness of Reablement

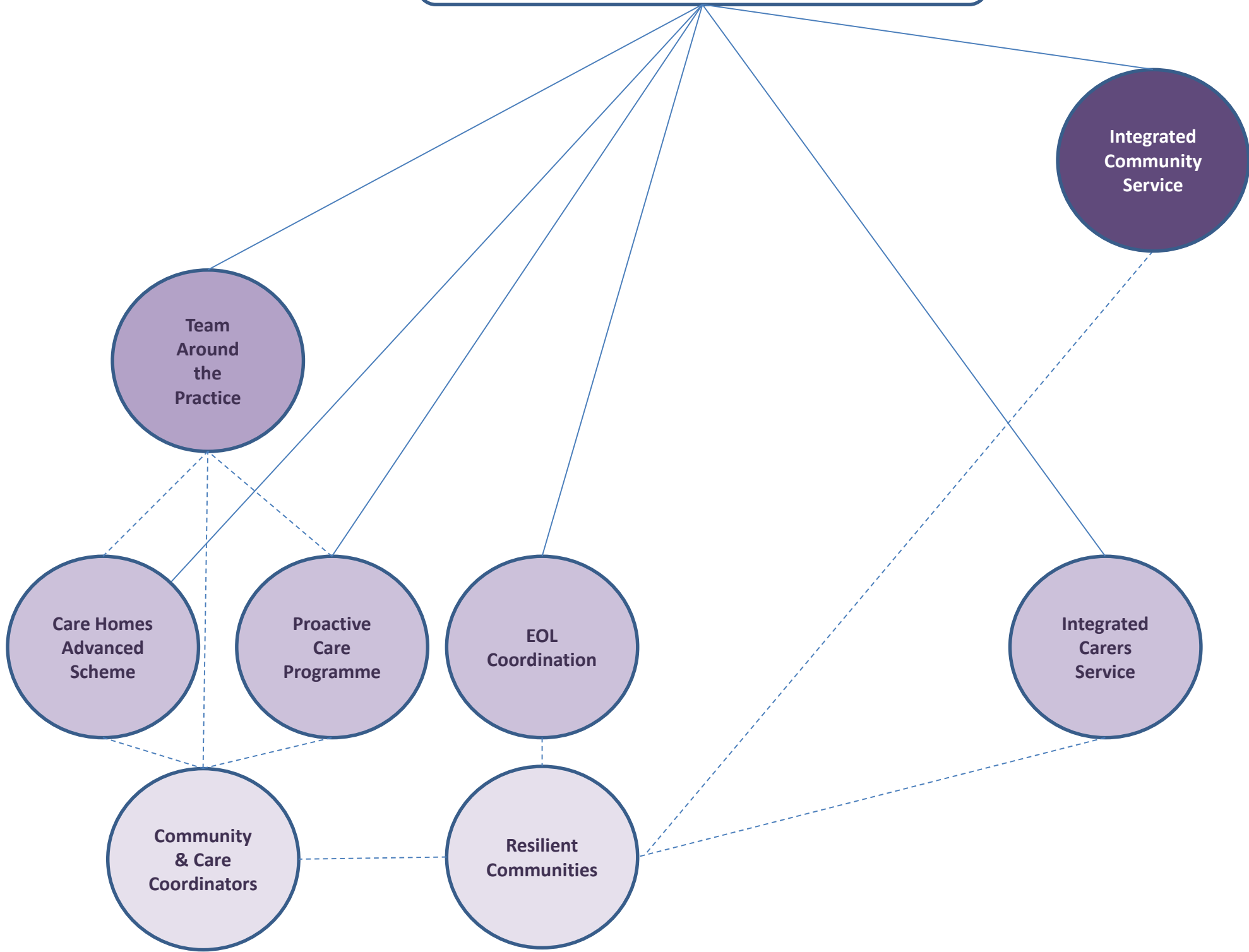


Target:
2.4% Increase in proportion of people still at home 91 days after discharge

Enabler	
Low Contributor	Under 0.5% increase
Medium Contributor	0.5 – 1% Increase
High Contributor	Over 1% Increase

BCF4 – Delayed Transfer of Care

Target:
 Numbers of 'delayed days' per year does not increase.
 Max level : 6829 days Jan – Dec '15
 (Av 569 PCM)



Enabler	
Low Contributor	1 – 50 Days PCM
Medium Contributor	50 – 300 Days PMC
High Contributor	Over 300 Days PCM

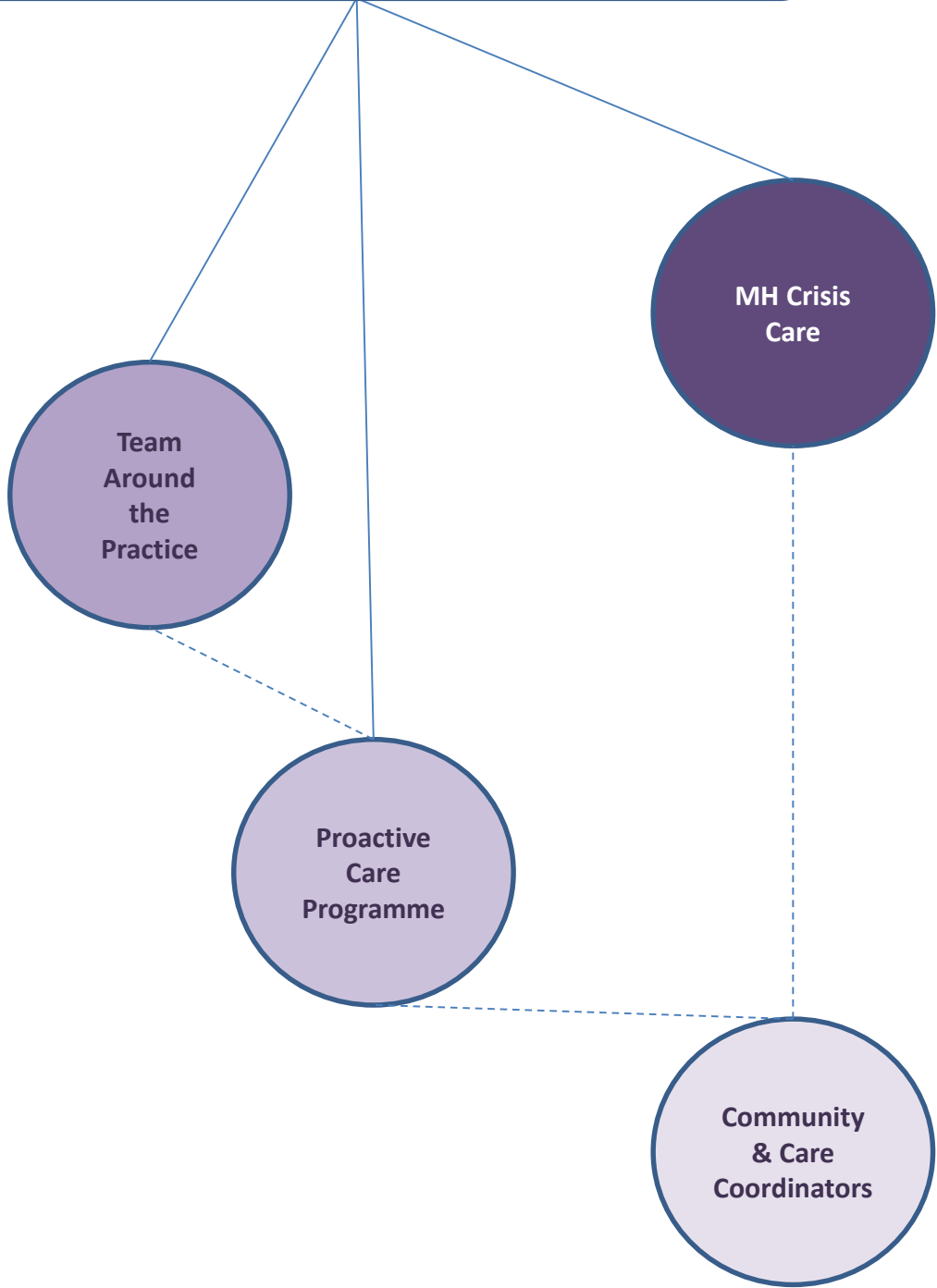
BCF5 – Patient/Service User Experience Metric (MH Crisis Contact)

Target:
Increase percentage of people who know who to contact in case of MH emergency by 20%

Enabler

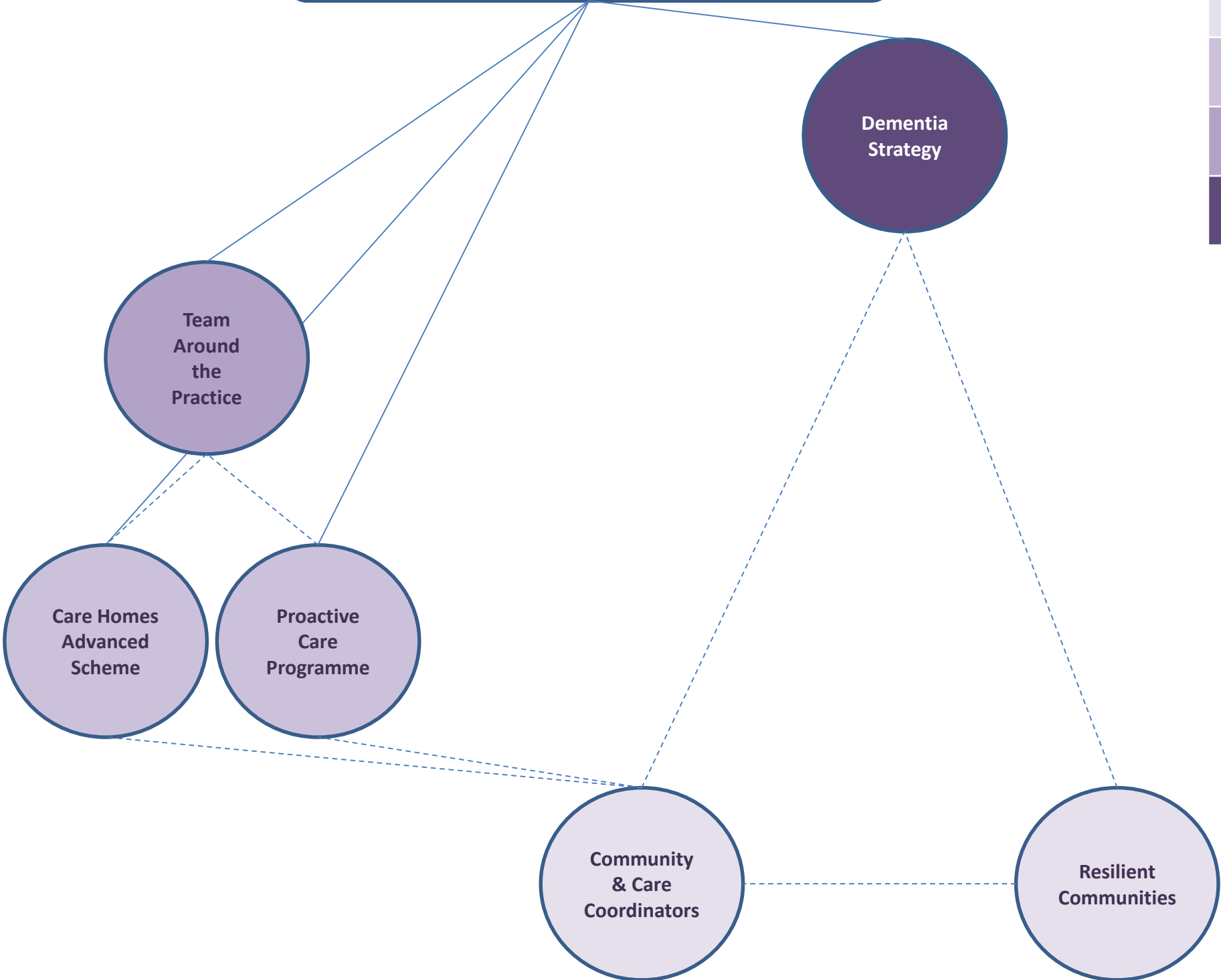
Contributes

High Contributor



BCF6 – Local Metric (Admissions to Redwoods)

Target:
Number of people with a dementia diagnosis admitted to Redwoods reduces by 0.2%. Max number of admissions PCM -3



Enabler	
Low Contributor	0–2 admissions PCM
Medium Contributor	2-4 admissions PCM
High Contributor	Over 4 admissions PCM